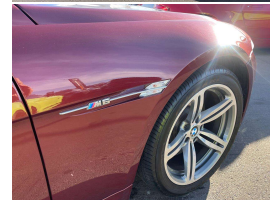


2007 BMW M6 5.0 V10 Cabriolet NZ New



VEHICLE INFORMATION

Cash Price

Includes GST,
Registration &
Licensing

\$39,995

Finance this vehicle
from only

\$145.12

per week*

Total Amount Payable

\$49,730.86



Gain peace of mind
with Mechanical
Breakdown Insurance.
Ask us how.

Body

2 door, Convertible

Odometer

81,000 km

Engine

5000 cc, V10

Fuel Type

Petrol

Transmission

Automatic

Wheels

18.0000"

VIN

-

Reg No.

HSJ591

Ext Colour

Burgundy Red Metallic

History

-

Seats

4 seats

Interior

Ivory M Leather

Audio

-

Stock ID

12553

2007 BMW M6 5.0 V10 SMG Soft-top Convertible, NZ New with Full History and a future very collectable model! Attractive and unique Wine Red Metallic with Ivory M Leather, Only 81,000kms from new!, Heated/Electric Seats, Electric Soft-top Roof, Dual M6 Sports Exhausts, Heads-up display, Carbon interior inlays, BMW I-Drive CD/Stereo/AUX/NZ Navigation/Bluetooth, Reverse Camera fitted, 507 BHP naturally aspirated 5.0 V10 performance, SMG Semi-Automatic, Push Button Start, Full Electrics and more. A very hard car to find and one to put away as the last of the V10s!

Note- Just fully serviced.

christchurch european | the european specialists

Phone 03 366 8328, Email sales@christchurcheuropean.co.nz
511 Blenheim Road, Sockburn, Christchurch 8042, New Zealand
www.christchurcheuropean.co.nz

Niki Mills - 021 353 315
Paul Mills - 022 536 0868
Josh Giles - 021 087 54777

* Finance calculation based on a 60 month term, 30% deposit and with an example annual fixed interest rate of 10.95%. Actual interest rate may be higher or lower. Includes an establishment fee of \$500.00 and a monthly maintenance fee of \$10.00. Full term total amount payable of \$49,730.86. Estimate only, not an offer of finance. Terms, conditions and lending criteria apply.