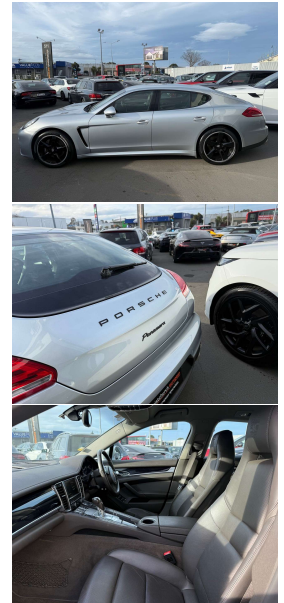


# 2015 Porsche Panamera Facelift PDK



## VEHICLE INFORMATION

### Cash Price

Includes GST,  
Registration &  
Licensing

**\$39,995**

Finance this vehicle  
from only

**\$145.12**

per week\*

Total Amount Payable

**\$49,730.86**



Gain peace of mind  
with Mechanical  
Breakdown Insurance.  
Ask us how.

### Body

4 door, Sedan

### Odometer

74,000 km

### Engine

3600 cc, V6

### Fuel Type

Petrol

### Transmission

Automatic, Rear Wheel

### Wheels

20.0000"

### VIN

WP0ZZZ97ZFL002351

### Reg No.

-

### Ext Colour

Silver Metallic

### History

-

### Seats

4 seats

### Interior

Black, Leather

### Audio

-

### Stock ID

13535

2015 Porsche Panamera PDK Facelift V6 Sedan, Attractive Platinum Silver Metallic on Black GTS Style 20 inch Sports Alloys, Full Leather with Electric Seats, Facelift LED Lighting and Bootlid, Privacy Glass, Switchable Sports Exhaust System, Dark Piano Wood inlays, Electric Spoiler, 7 Speed PDK Dual-Clutch Automatic, Upgraded Command Touch Screen Bluetooth Streaming/AUX and Reverse Camera, Cruise Control, Parking Sensors, Climate Air, Remote Locking, Black Badging, Full Electrics etc. Once over \$250k when new!. A lot of car today at \$44,995, be quick!

**christchurch european** | the european specialists

Phone 03 366 8328, Email [sales@christchurcheruropean.co.nz](mailto:sales@christchurcheruropean.co.nz)  
511 Blenheim Road, Sockburn, Christchurch 8042, New Zealand  
[www.christchurcheruropean.co.nz](http://www.christchurcheruropean.co.nz)

Niki Mills - 021 353 315  
Paul Mills - 022 536 0868  
Josh Giles - 021 087 54777

\* Finance calculation based on a 60 month term, 30% deposit and with an example annual fixed interest rate of 10.95%. Actual interest rate may be higher or lower. Includes an establishment fee of \$500.00 and a monthly maintenance fee of \$10.00. Full term total amount payable of \$49,730.86. Estimate only, not an offer of finance. Terms, conditions and lending criteria apply.