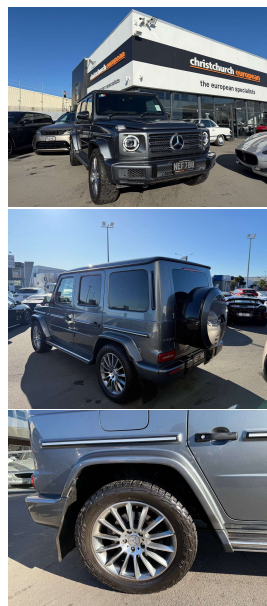


# 2019 Mercedes-Benz G 350 d 9G 4Matic New



## VEHICLE INFORMATION

### Cash Price

Includes GST,  
Registration &  
Licensing

**\$169,995**

Finance this vehicle  
from only

**\$601.19**

per week\*

Total Amount Payable

**\$207,308.39**



Gain peace of mind  
with Mechanical  
Breakdown Insurance.  
Ask us how.

### Body

5 door, RV/SUV

### Odometer

55,000 km

### Engine

3000 cc, Turbo

### Fuel Type

Diesel

### Transmission

9 Speed Automatic, 4WD

### Wheels

20.0000"

### VIN

-

### Reg No.

NEF700

### Ext Colour

Grey Metallic

### History

-

### Seats

5 seats, Leather

### Interior

Black Leather with Red Stitching

### Audio

-

### Stock ID

13858

2019 Mercedes Benz G 350d 9G 4Matic New Shape G Wagon, A rare car! The latest Facelift version- and much improved- G Wagon model with the economy/torque of Mercedes Benz's brilliant In-line 6 Diesel/600NM engine, Latest 9G Automatic transmission, Revised LED Lighting, Full Facelift Digital Touch Screen Cockpit, 20 inch Sports Alloys with new All-Terrain Tyres fitted, Premium Package Interior with additional Red stitching detail and Leather, Red Seatbelts, Radar Adaptive Cruise Control, Push Button Start, Touch Screen Apple Car Play/NZ Nav/Bluetooth Phone and Music, 360 Cameras, Privacy Glass, Glass Sunroof, Ambient Interior Lighting, Heated Seats, Mudflaps, Climate Air, Multiple Airbags, Full Electrics, Black Plates etc. The best-looking late model SUV to own today!

**christchurch european** | the european specialists

Phone 03 366 8328, Email [sales@christchurcheruropean.co.nz](mailto:sales@christchurcheruropean.co.nz)  
511 Blenheim Road, Sockburn, Christchurch 8042, New Zealand  
[www.christchurcheruropean.co.nz](http://www.christchurcheruropean.co.nz)

Niki Mills - 021 353 315  
Paul Mills - 022 536 0868  
Josh Giles - 021 087 54777

\* Finance calculation based on a 60 month term, 30% deposit and with an example annual fixed interest rate of 10.95%. Actual interest rate may be higher or lower. Includes an establishment fee of \$500.00 and a monthly maintenance fee of \$10.00. Full term total amount payable of \$207,308.39. Estimate only, not an offer of finance. Terms, conditions and lending criteria apply.