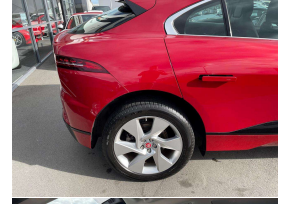


# 2019 Jaguar I-Pace SE 400PS EV



## VEHICLE INFORMATION

### Cash Price

Includes GST,  
Registration &  
Licensing

**\$54,995**

Finance this vehicle  
from only

**\$197.75**

per week\*

Total Amount Payable

**\$67,912.88**



Gain peace of mind  
with Mechanical  
Breakdown Insurance.  
Ask us how.

### Body

5 door, Sedan

### Odometer

41,000 km

### Engine

0 cc, Electric

### Fuel Type

Electricity

### Transmission

Automatic

### Wheels

18.0000"

### VIN

-

### Reg No.

QJD907

### Ext Colour

Wine Red Metallic

### History

-

### Seats

5 seats

### Interior

Black Leather

### Audio

-

### Stock ID

11601

2019 Jaguar I-Pace 400PS SE EV AWD, Stunning Wine Red Metallic with Black Leather Seats combination, Factory SE Sports Alloys, LED Matrix Lighting, Heated/Electric Seats, Lane Keep Assist, Touch Screen NZ NAV/CD/AUX/Bluetooth Phone and Music Streaming/Car Play and Reverse Camera, Full Park Assist, Full Glass Roof, Dual Motor AWD, Multiple Airbags, Meridian Surround Sound, Full Electrics etc. Up to 450kms range on a full charge. Jaguar Luxury in a low running cost/no emission EV with one the largest range Batteries around.

Note- Factory recalls completed by Archibald's Jaguar.

**christchurch european** | the european specialists

Phone 03 366 8328, Email [sales@christchurcheuropean.co.nz](mailto:sales@christchurcheuropean.co.nz)  
511 Blenheim Road, Sockburn, Christchurch 8042, New Zealand  
[www.christchurcheuropean.co.nz](http://www.christchurcheuropean.co.nz)

Niki Mills - 021 353 315  
Paul Mills - 022 536 0868  
Josh Giles - 021 087 54777

\* Finance calculation based on a 60 month term, 30% deposit and with an example annual fixed interest rate of 10.95%. Actual interest rate may be higher or lower. Includes an establishment fee of \$500.00 and a monthly maintenance fee of \$10.00. Full term total amount payable of \$67,912.88. Estimate only, not an offer of finance. Terms, conditions and lending criteria apply.