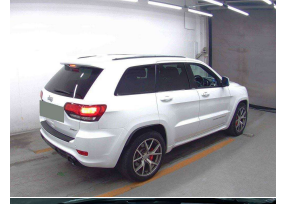
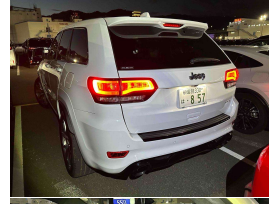


# 2017 Jeep Grand Cherokee SRT8 Hemi 8 Speed



## VEHICLE INFORMATION

### Cash Price

Includes GST,  
Registration &  
Licensing

**\$64,995**

Finance this vehicle  
from only

**\$232.83**

per week\*

Total Amount Payable

**\$80,034.23**



Gain peace of mind  
with Mechanical  
Breakdown Insurance.  
Ask us how.

### Body

5 door, SUV / 4x4

### Odometer

66,000 km

### Engine

6400 cc, V8 Hemi

### Fuel Type

Petrol

### Transmission

Automatic, 4WD

### Wheels

20.0000"

### VIN

1C4RJFHJ9GC473926

### Reg No.

-

### Ext Colour

White

### History

-

### Seats

5 seats

### Interior

Black Leather Sports Seats

### Audio

-

### Stock ID

13977

2017 Jeep Grand Cherokee SRT8 6.4 V8 Hemi Facelift, Pearl White with SRT Part Black Leather Sports Seats with factory 20 inch SRT8 Chrome Alloy wheels, Low 66,000kms from new, Panoramic Glass Sunroof, Brembo Brakes with Red Brake Calipers, LED Lighting, Push Button Start, Revised 17M7 Gear Shifter, Heated/Cooling Seats with Heated Steering Wheel, Radar Adaptive Cruise Control, Privacy Glass, Dual Sports Exhausts, 8 Speed Automatic, SRT Bonnet inlets, Facelift upgraded Touch Screen NZ NAV/Bluetooth Streaming/AUX/USB and Reverse Camera, Carbon interior inlays, Heated Rear Seats, Lane Assist, Full Electrics etc. Great spec and look with the performance to match!

Arriving Soon, Small holding deposit will secure this vehicle pre-arrival.

**christchurch european** | the european specialists

Phone 03 366 8328, Email [sales@christchurcheuropean.co.nz](mailto:sales@christchurcheuropean.co.nz)  
511 Blenheim Road, Sockburn, Christchurch 8042, New Zealand  
[www.christchurcheuropean.co.nz](http://www.christchurcheuropean.co.nz)

Niki Mills - 021 353 315  
Paul Mills - 022 536 0868  
Josh Giles - 021 087 54777

\* Finance calculation based on a 60 month term, 30% deposit and with an example annual fixed interest rate of 10.95%. Actual interest rate may be higher or lower. Includes an establishment fee of \$500.00 and a monthly maintenance fee of \$10.00. Full term total amount payable of \$80,034.23. Estimate only, not an offer of finance. Terms, conditions and lending criteria apply.