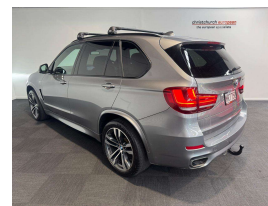


# 2017 BMW X5 50d XDrive Motorsport Triple-Turbo



## VEHICLE INFORMATION

### Cash Price

Includes GST,  
Registration &  
Licensing

**\$37,995**

Finance this vehicle  
from only

**\$138.11**

per week\*

Total Amount Payable  
\$47,306.59



Gain peace of mind  
with Mechanical  
Breakdown Insurance.  
Ask us how.

### Body

5 door, SUV / 4x4

### Odometer

151,000 km

### Engine

3000 cc, Internal Combustion

### Fuel Type

Diesel

### Transmission

Automatic, 4WD

### Wheels

20.0000"

### VIN

WBAKS820X00W24724

### Reg No.

MRT750

### Ext Colour

Grey Metallic

### History

NZ New

### Seats

5 seats

### Interior

Black Leather Comfort Seats

### Audio

-

### Stock ID

14240

2017 BMW X5 50d X-Drive Motorsport Triple-Turbo Diesel Facelift, Top of range 50d Triple-Turbo Diesel-560NM, NZ New vehicle in easy-care Grey Metallic with Premium Black Leather option, 20 inch Motorsport Sports Alloys, Privacy Glass, LED Lighting, Parking Sensors, Optioned Full Digital Dash Display, Heads-up Display, Additional Motorsport Colour-coding, Revised 17MY Touch-Screen BMW i Drive with CD/Stereo/Bluetooth Phone and Music Streaming/Phone and NZ Navigation, Radar Adaptive Cruise Control, Heated/Electric Seats, Titanium inlays, Black Grills, Added Roof Rail Thule Roof Racks, Towbar, Privacy Glass, Full Electrics etc. A very impressive engine with brilliant economy and Torque Superb for Towing.

**christchurch european** | the european specialists

Phone 03 366 8328, Email [sales@christchurcheuropean.co.nz](mailto:sales@christchurcheuropean.co.nz)  
511 Blenheim Road, Sockburn, Christchurch 8042, New Zealand  
[www.christchurcheuropean.co.nz](http://www.christchurcheuropean.co.nz)

Niki Mills - 021 353 315  
Paul Mills - 022 536 0868  
Josh Giles - 021 087 54777

\* Finance calculation based on a 60 month term, 30% deposit and with an example annual fixed interest rate of 10.95%. Actual interest rate may be higher or lower. Includes an establishment fee of \$500.00 and a monthly maintenance fee of \$10.00. Full term total amount payable of \$47,306.59. Estimate only, not an offer of finance. Terms, conditions and lending criteria apply.