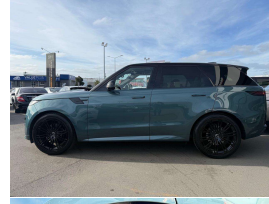


# 2023 Land Rover Range Rover Sport D300



## VEHICLE INFORMATION

### Cash Price

Includes GST,  
Registration &  
Licensing

**\$179,995**

Finance this vehicle  
from only

**\$636.27**

per week\*

Total Amount Payable

**\$219,429.73**



Gain peace of mind  
with Mechanical  
Breakdown Insurance.  
Ask us how.

### Body

5 door, RV/SUV

### Odometer

8,000 km

### Engine

3000 cc

### Fuel Type

Diesel

### Transmission

8 Speed Automatic, 4WD

### Wheels

23.0000"

### VIN

SAL1A2AW2RA160737

### Reg No.

-

### Ext Colour

Giola Green Metallic

### History

-

### Seats

5 seats

### Interior

Black/Cream Two Tone Leather

### Audio

-

### Stock ID

13761

2023 Range Rover Sport D300 Diesel R-Dynamic SE Latest Model. Just 8,000kms from new!, Attractive and unique Giola Green Metallic with Premium Black/Cream Two-tone Leather, Upgraded 23 inch Autobiography Sports Alloys in Black fitted, SVO Premium Bespoke Carpets, Dynamic Air Suspension, Privacy Glass, Premium Heated seats, Heated Steering Wheel, Full Glass Panoramic Roof, Daytime LED Matrix Lighting, Black Contrast Roof, Electric Tailgate, Flush Electric Door Handles, Meridian Surround Sound, Full Virtual Dash Cluster with 3D NZ Nav/Apple Car Play/Reverse Camera/Bluetooth, Radar Adaptive Cruise Control, Keyless entry, Full Electrics etc. One of the very best Luxury SUV's one can buy today.

**christchurch european** | the european specialists

Phone 03 366 8328, Email [sales@christchurcheuropean.co.nz](mailto:sales@christchurcheuropean.co.nz)  
511 Blenheim Road, Sockburn, Christchurch 8042, New Zealand  
[www.christchurcheuropean.co.nz](http://www.christchurcheuropean.co.nz)

Niki Mills - 021 353 315  
Paul Mills - 022 536 0868  
Josh Giles - 021 087 54777

\* Finance calculation based on a 60 month term, 30% deposit and with an example annual fixed interest rate of 10.95%. Actual interest rate may be higher or lower. Includes an establishment fee of \$500.00 and a monthly maintenance fee of \$10.00. Full term total amount payable of \$219,429.73. Estimate only, not an offer of finance. Terms, conditions and lending criteria apply.