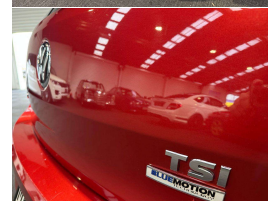
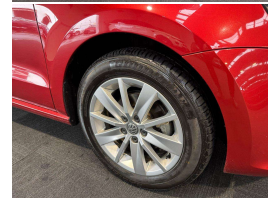


# 2014 Volkswagen Polo 1.2 TSI Comfort Line Hatch



## VEHICLE INFORMATION

### Cash Price

Includes GST,  
Registration &  
Licensing

**\$12,995**

Finance this vehicle  
from only

**\$50.40**

per week\*

Total Amount Payable

**\$17,003.22**



### Body

5 door, Hatchback

### Odometer

68,000 km

### Engine

1200 cc, Internal Combustion

### Fuel Type

-

### Transmission

Automatic, Front Wheel

### Wheels

-

### VIN

VWVZZZ6RZFU012999

### Reg No.

MWL566

### Ext Colour

Red

### History

Ex-Overseas, 1 owner

### Seats

5 seats

### Interior

Black

### Audio

-

### Stock ID

13929



Gain peace of mind  
with Mechanical  
Breakdown Insurance.  
Ask us how.

2014 Volkswagen Polo 1.2 TSI Facelift Model, Ultra-economical 1.2 TSI petrol!, Just 68,000kms from new, Multiple Airbags, ABS, Touch Screen Bluetooth Phone and Music/AUX/Reverse Camera, Factory Volkswagen Alloy Wheels, Climate Air, Radar Cruise Control, Auto Lights. Late model and perfect first safe little car!

**christchurch european** | the european specialists

Phone 03 366 8328, Email [sales@christchurcheuropean.co.nz](mailto:sales@christchurcheuropean.co.nz)  
511 Blenheim Road, Sockburn, Christchurch 8042, New Zealand  
[www.christchurcheuropean.co.nz](http://www.christchurcheuropean.co.nz)

Niki Mills - 021 353 315  
Paul Mills - 022 536 0868  
Josh Giles - 021 087 54777

\* Finance calculation based on a 60 month term, 30% deposit and with an example annual fixed interest rate of 10.95%. Actual interest rate may be higher or lower. Includes an establishment fee of \$500.00 and a monthly maintenance fee of \$10.00. Full term total amount payable of \$17,003.22. Estimate only, not an offer of finance. Terms, conditions and lending criteria apply.