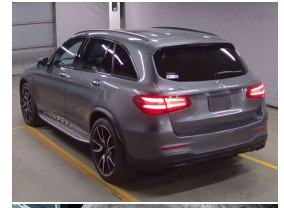
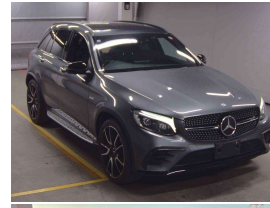


# 2016 Mercedes-Benz GLC 43 AMG Night Package



## VEHICLE INFORMATION

### Cash Price

Includes GST,  
Registration &  
Licensing

**\$44,995**

Finance this vehicle  
from only

**\$162.67**

per week\*

Total Amount Payable

**\$55,791.53**



Gain peace of mind  
with Mechanical  
Breakdown Insurance.  
Ask us how.

### Body

5 door, SUV / 4x4

### Odometer

52,000 km

### Engine

3000 cc, Internal Combustion

### Fuel Type

Petrol

### Transmission

9 Speed Automatic, 4Matic AWD

### Wheels

21.0000"

### VIN

WDC2539642F146213

### Reg No.

-

### Ext Colour

Selenite Grey Metallic

### History

Ex-Overseas

### Seats

5 seats

### Interior

Black AMG Exclusive Leather

### Audio

-

### Stock ID

14408

2016 Mercedes Benz GLC 43 AMG 4Matic 9 Speed Night Package, A very good looking mid-size Mercedes Benz SUV. Only 52,000kms from new, Grade 4.5/5!. 3.0 V6 Turbo-Charged/270KW, 21 inch Night-Package AMG Sports Alloys, Factory Running Boards, Adaptive Radar DISTRONIC Cruise Control with Collision Avoidance and Lane Keep Assist, Park Assist with 360 Cameras, Panoramic Glass Roof, Burmester Audio, Ambient Lighting, Dynamic LED Headlights, AMG Sports Premium Leather interior, AMG Night Styling Pack and skirts, Keyless Go, Mercedes Command CD/Stereo/Bluetooth Streaming/USB, 9 Speed Automatic, Full Electrics etc. These tick all the boxes!..

**christchurch european** | the european specialists

Phone 03 366 8328, Email [sales@christchurcheuropean.co.nz](mailto:sales@christchurcheuropean.co.nz)  
511 Blenheim Road, Sockburn, Christchurch 8042, New Zealand  
[www.christchurcheuropean.co.nz](http://www.christchurcheuropean.co.nz)

Niki Mills - 021 353 315  
Paul Mills - 022 536 0868  
Josh Giles - 021 087 54777

\* Finance calculation based on a 60 month term, 30% deposit and with an example annual fixed interest rate of 10.95%. Actual interest rate may be higher or lower. Includes an establishment fee of \$500.00 and a monthly maintenance fee of \$10.00. Full term total amount payable of \$55,791.53. Estimate only, not an offer of finance. Terms, conditions and lending criteria apply.