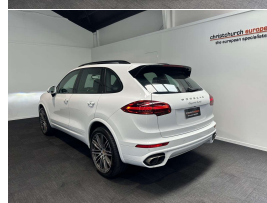


# 2015 Porsche Cayenne Turbo 4.8 Twin-Turbo



## VEHICLE INFORMATION

### Cash Price

Includes GST,  
Registration &  
Licensing

**\$69,995**

Finance this vehicle  
from only

**\$250.37**

per week\*

Total Amount Payable  
\$86,094.90



### Body

5 door, RV/SUV

### Odometer

56,000 km

### Engine

4800 cc, V8 Bi-Turbo

### Fuel Type

Petrol

### Transmission

8 Speed Automatic, 4WD

### Wheels

21.0000"

### VIN

WP1ZZZ92ZFLA80660

### Reg No.

-

### Ext Colour

Carrera White

### History

-

### Seats

5 seats

### Interior

Black Leather GTS Sports Seats

### Audio

-

### Stock ID

13665



Gain peace of mind  
with Mechanical  
Breakdown Insurance.  
Ask us how.

2015 Porsche Cayenne Turbo 4.8 V8 Facelift Twin-Turbo, 520 BHP Rocketship SUV!, Only 56,000kms from new, High-spec vehicle in Carrera White with upgraded Black Leather GTS Style Multi-Way Sports Seats, Full lower colour-coding in Carrera White, Facelift 21 inch Turbo 2 Sports Alloys with Red Brake Calipers, Facelift Steering Wheel and interior, PDLS LED Lighting, Added Air Suspension option, Heated Front and Rear Seats, Added Cooling Seats, 4 Zone Climate Air, Premium BOSE Audio Package, Dual Sports Tailpipes, Roof Rails, Silver Trim inlays, Touch Screen PCM AUX/Bluetooth Phone and Music/Nav and Reverse Camera, Sport-Chrono Package, Panoramic Glass Sunroof, ABS/ESP, 8 Speed Automatic, Full Electrics etc. The ultimate Porsche SUV here!.

**christchurch european | the european specialists**

Phone 03 366 8328, Email [sales@christchurcheruropean.co.nz](mailto:sales@christchurcheruropean.co.nz)  
511 Blenheim Road, Sockburn, Christchurch 8042, New Zealand  
[www.christchurcheruropean.co.nz](http://www.christchurcheruropean.co.nz)

Niki Mills - 021 353 315  
Paul Mills - 022 536 0868  
Josh Giles - 021 087 54777

\* Finance calculation based on a 60 month term, 30% deposit and with an example annual fixed interest rate of 10.95%. Actual interest rate may be higher or lower. Includes an establishment fee of \$500.00 and a monthly maintenance fee of \$10.00. Full term total amount payable of \$86,094.90. Estimate only, not an offer of finance. Terms, conditions and lending criteria apply.