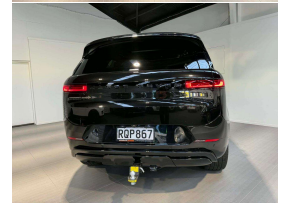
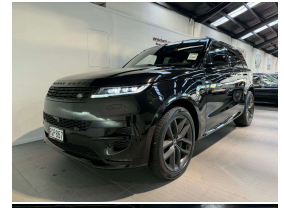
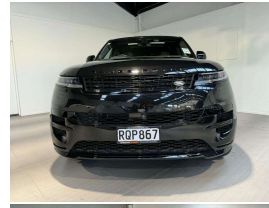


2024 Land Rover Range Rover Sport D300 HSE R-



VEHICLE INFORMATION

Cash Price

Includes GST,
Registration &
Licensing

\$169,995

Finance this vehicle
from only

\$615.03

per week*

Total Amount Payable

\$210,905.42



Gain peace of mind
with Mechanical
Breakdown Insurance.
Ask us how.

Body

SUV / 4x4

Odometer

9,000 km

Engine

3000 cc, Internal Combustion

Fuel Type

Diesel

Transmission

8 Speed Automatic, 4WD

Wheels

22.0000"

VIN

SAL1A2AW1RA159402

Reg No.

RQP867

Ext Colour

Santorini Black Metallic

History

Ex-Overseas

Seats

5 seats

Interior

Black Leather HSE Seating

Audio

-

Stock ID

14280

2024 Range Rover Sport D300 HSE R-Dynamic Latest Model, Attractive Santorini Black Metallic with Premium Black HSE Leather, Just 6,000kms from new, Factory 22 inch HSE Sports Alloys in Grey, Heads-up Display, Heated and Cooling Seats, SVO Premium Bespoke Carpets, Dynamic Air Suspension, Privacy Glass, Heated Steering Wheel, Full Glass Panoramic Roof, Daytime LED Matrix Lighting, Electric Tailgate, Flush Electric Door Handles, Meridian Surround Sound, Full Virtual Dash Cluster with 3D NZ Nav/Apple Car Play/Reverse Camera/Bluetooth, Radar Adaptive Cruise Control, Keyless entry, Towbar fitted, Privacy Glass, Full Electrics etc. This Range Rover is in as new condition!

christchurch european | the european specialists

Phone 03 366 8328, Email sales@christchurcheruropean.co.nz
511 Blenheim Road, Sockburn, Christchurch 8042, New Zealand
www.christchurcheruropean.co.nz

Niki Mills - 021 353 315
Paul Mills - 022 536 0868
Josh Giles - 021 087 54777

* Finance calculation based on a 60 month term, 30% deposit and with an example annual fixed interest rate of 11.95%. Actual interest rate may be higher or lower. Includes an establishment fee of \$500.00 and a monthly maintenance fee of \$10.00. Full term total amount payable of \$210,905.42. Estimate only, not an offer of finance. Terms, conditions and lending criteria apply.