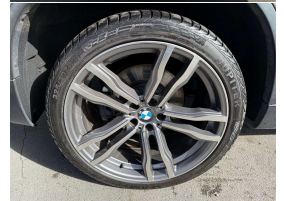


# 2010 BMW X6 M 4.4 V8 Bi-Turbo SUV Coupe



## VEHICLE INFORMATION

### Cash Price

Includes GST,  
Registration &  
Licensing

**\$22,995**

Finance this vehicle  
from only

**\$85.48**

per week\*

Total Amount Payable  
\$29,124.57



Gain peace of mind  
with Mechanical  
Breakdown Insurance.  
Ask us how.

### Body

4 door, RV/SUV

### Odometer

143,000 km

### Engine

4400 cc

### Fuel Type

Petrol

### Transmission

Automatic, 4WD

### Wheels

21.0000"

### VIN

-

### Reg No.

RBU670

### Ext Colour

Grey Metallic

### History

-

### Seats

4 seats

### Interior

Black Leather

### Audio

-

### Stock ID

13638

2010 BMW X6 4.4 V8 Bi-Turbo 4WD Coupe, Flagship 400 BHP V8 Twin-Turbo model!. Space Grey Metallic with Premium Heated/Leather Sports Seats, Upgraded 21 inch X6M Sports Alloys fitted, Push Button Keyless start, Carbon style inlays, Privacy Glass, Electric Tailgate, ABS/ESP, Facelift BMW I-Drive CD/Stereo/AUX/Cameras/Bluetooth/NZ Navigation, Running Boards, Black Grills, Auto Lights/Wipers, Paddleshift, Full Electrics etc. Once over \$250k new!. A very well-kept and good looking performance truck!

**christchurch european** | the european specialists

Phone 03 366 8328, Email [sales@christchurcheuropean.co.nz](mailto:sales@christchurcheuropean.co.nz)  
511 Blenheim Road, Sockburn, Christchurch 8042, New Zealand  
[www.christchurcheuropean.co.nz](http://www.christchurcheuropean.co.nz)

Niki Mills - 021 353 315  
Paul Mills - 022 536 0868  
Josh Giles - 021 087 54777

\* Finance calculation based on a 60 month term, 30% deposit and with an example annual fixed interest rate of 10.95%. Actual interest rate may be higher or lower. Includes an establishment fee of \$500.00 and a monthly maintenance fee of \$10.00. Full term total amount payable of \$29,124.57. Estimate only, not an offer of finance. Terms, conditions and lending criteria apply.