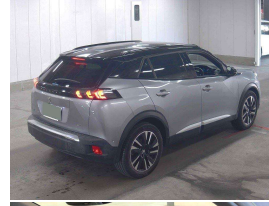


2022 Peugeot e-2008 GT Line Electric



VEHICLE INFORMATION

Cash Price

Includes GST,
Registration &
Licensing

\$37,995

Finance this vehicle
from only

\$141.25

per week*

Total Amount Payable

\$48,122.24



Gain peace of mind
with Mechanical
Breakdown Insurance.
Ask us how.

Body

5 door, Hatchback

Odometer

19,000 km

Engine

0 cc, Electric

Fuel Type

Electricity

Transmission

Automatic

Wheels

-

VIN

VR3UKZKXZNUJ70362

Reg No.

-

Ext Colour

Grey Metallic

History

Ex-Overseas

Seats

5 seats

Interior

Black Half Leather

Audio

-

Stock ID

14720

2022 Peugeot e-2008 GT Line Full-Electric SUV, As new Peugeot Fully Electric Zero-Emissions Luxury SUV with a 50 kWh Battery for up to 320 kms range on a full charge! Just 19,000kms from new, Factory 18 inch Polished GT Sports Alloys, Distinctive LED Running Lights, Glass Sunroof, Radar Cruise Control, Privacy Glass, Part Leather/Velour GT Line Sports Seats, Lane Assist, Heated Seats, Full Digital Cockpit with Bluetooth Phone and Music/Apple Car Play, Wireless Phone Charge pad, Multiple Airbags, ABS, Full Electrics etc. A very popular and low running costs practical size EV designed for the future!

Arriving Soon, Small holding deposit will secure this vehicle pre-arrival

christchurch european | the european specialists

Phone 03 366 8328, Email sales@christchurcheruropean.co.nz
511 Blenheim Road, Sockburn, Christchurch 8042, New Zealand
www.christchurcheruropean.co.nz

Niki Mills - 021 353 315
Paul Mills - 022 536 0868
Josh Giles - 021 087 54777

* Finance calculation based on a 60 month term, 30% deposit and with an example annual fixed interest rate of 11.95%. Actual interest rate may be higher or lower. Includes an establishment fee of \$500.00 and a monthly maintenance fee of \$10.00. Full term total amount payable of \$48,122.24. Estimate only, not an offer of finance. Terms, conditions and lending criteria apply.