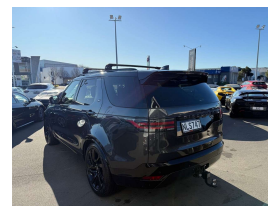


2021 Land Rover Discovery 5 D300 Facelift SE R-



VEHICLE INFORMATION

Cash Price

Includes GST,
Registration &
Licensing

\$94,995

Finance this vehicle
from only

\$338.08

per week*

Total Amount Payable
\$116,398.27



Gain peace of mind
with Mechanical
Breakdown Insurance.
Ask us how.

Body

5 door, RV/SUV

Odometer

99,000 km

Engine

3000 cc

Fuel Type

Diesel

Transmission

8 Speed Automatic, 4WD

Wheels

21.0000"

VIN

SALRA2AW6M2450113

Reg No.

NLS747

Ext Colour

Carpathian Dark Grey Metallic

History

-

Seats

7 seats

Interior

Black Leather

Audio

-

Stock ID

13856

2021 Land Rover Discovery 5 D300 R-Dynamic SE New Model 7 Seater, New Generation 2022MY D300 Straight-Six/650NM Discovery 5 with multiple exterior/interior upgrades, NZ New in attractive Dark Carpathian Grey Metallic with Black Windsor Luxury Leather, 21 inch Factory Gloss Black Turbine Style Sports Alloys, Sliding Panoramic Glass Roof, Narvik Black Exterior Package, Premium Heated Seats, Heated Steering Wheel, Black Roof Rails with Roof Racks fitted, Radar Cruise Control, 4 Zone Climate Air, 360 Surround Camera Package, Console Fridge, Widescreen revised Virtual Dash Cluster with NZ NAV/BT/AUX/USBs/In-Control Aps/Apple Car Play, Carbon inlays package, Privacy Glass, LED Lighting, Meridian Surround Sound, Air Suspension, Factory Towbar, Full Electrics etc. Priced to sell with this spec and look in the new model!

christchurch european | the european specialists

Phone 03 366 8328, Email sales@christchurcheuropean.co.nz
511 Blenheim Road, Sockburn, Christchurch 8042, New Zealand
www.christchurcheuropean.co.nz

Niki Mills - 021 353 315
Paul Mills - 022 536 0868
Josh Giles - 021 087 54777

* Finance calculation based on a 60 month term, 30% deposit and with an example annual fixed interest rate of 10.95%. Actual interest rate may be higher or lower. Includes an establishment fee of \$500.00 and a monthly maintenance fee of \$10.00. Full term total amount payable of \$116,398.27. Estimate only, not an offer of finance. Terms, conditions and lending criteria apply.