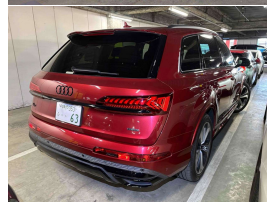
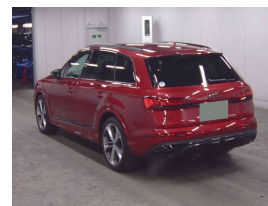


# 2022 Audi Q7 55 TFSI S Line Quattro Facelift



## VEHICLE INFORMATION

### Cash Price

Includes GST,  
Registration &  
Licensing

**\$89,995**

Finance this vehicle  
from only

**\$320.53**

per week\*

Total Amount Payable  
\$110,337.60



Gain peace of mind  
with Mechanical  
Breakdown Insurance.  
Ask us how.

### Body

5 door, SUV / 4x4

### Odometer

41,000 km

### Engine

3000 cc, Supercharged

### Fuel Type

Petrol

### Transmission

8 Speed Automatic, 4WD

### Wheels

21.0000"

### VIN

-

### Reg No.

-

### Ext Colour

Wine Red Metallic

### History

Ex-Overseas

### Seats

7 seats

### Interior

Black Leather S Line Sports

### Audio

-

### Stock ID

14486

2022 Audi Q7 S Line 55 TFSI MHEV Quattro 7 Seater, 2023MY Facelift Model just 41,000kms from new! 3.0 TFSI Mild-Hybrid V6 performance, Stunning and unique Wine Red Metallic with Black Leather combination, Black Exterior Package, Upgraded 21 inch Audi Sports Alloys in Grey fitted, Heated/Electric Seats, Heated Steering Wheel, Heads-Up Display, Full Virtual Dash with NZ NAV/CD/AUX/Bluetooth Phone and Music Streaming/360 Cameras/Apple Car Play, Upgraded Matrix LED Headlights, 8 Speed Automatic, Push Button Start, Radar Adaptive Cruise Control with Lane Assist, Premium Audio System, 7 Seats, Roof Rails fitted, Privacy Glass, Climate Air, Quattro 4WD, Rear Tray, Full Electrics etc. Save on list price new here for a highly unique Q7!

**christchurch european** | the european specialists

Phone 03 366 8328, Email [sales@christchurcheuropean.co.nz](mailto:sales@christchurcheuropean.co.nz)  
511 Blenheim Road, Sockburn, Christchurch 8042, New Zealand  
[www.christchurcheuropean.co.nz](http://www.christchurcheuropean.co.nz)

Niki Mills - 021 353 315  
Paul Mills - 022 536 0868  
Josh Giles - 021 087 54777

\* Finance calculation based on a 60 month term, 30% deposit and with an example annual fixed interest rate of 10.95%. Actual interest rate may be higher or lower. Includes an establishment fee of \$500.00 and a monthly maintenance fee of \$10.00. Full term total amount payable of \$110,337.60. Estimate only, not an offer of finance. Terms, conditions and lending criteria apply.