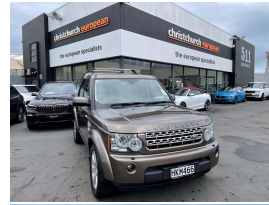


# 2010 Land Rover Discovery 4 3.0 SDV6 Diesel XS 7



## VEHICLE INFORMATION

### Cash Price

Includes GST,  
Registration &  
Licensing

**\$29,995**

Finance this vehicle  
from only

**\$103.83**

per week\*

Total Amount Payable

\$35,995.37

finance  
**NOW**



Gain peace of mind  
with Mechanical  
Breakdown Insurance.  
Ask us how.

### Body

5 door, SUV / 4x4

### Odometer

224,000 km

### Engine

3000 cc, SDV6

### Fuel Type

Diesel

### Transmission

Automatic, 4WD

### Wheels

19.0000"

### VIN

-

### Reg No.

HKM466

### Ext Colour

Nara Bronze Metallic

### History

-

### Seats

7 seats

### Interior

Cream Leather

### Audio

-

### Stock ID

10548

2010 Land Rover Discovery 4 3.0 SDV6 Diesel XS 7 Seater, Last owner 7 years and originally imported and sold by ourselves in 2014. Up-rated 3.0 SDV6 Diesel engine, Full Leather, Heated Seats, 7 Seats with fold-away rears, Parking Sensors, Air Suspension, Climate Air, Harmon Kardon Surround Sound, NZ Navigation and Bluetooth Phone, Push Button Start, Cruise Control, Mudflaps fitted, Roof Rails and Racks fitted, Towbar fitted, Full Electrics etc. A very unique colour-combination. Always popular!.

**christchurch european** | the european specialists

Phone 03 366 8328, Email [sales@christchurcheruropean.co.nz](mailto:sales@christchurcheruropean.co.nz)  
511 Blenheim Road, Sockburn, Christchurch 8042, New Zealand  
[www.christchurcheruropean.co.nz](http://www.christchurcheruropean.co.nz)

Niki Mills - 021 353 315  
Paul Mills - 022 536 0868  
Michael Mills - 022 043 3700

\* Finance calculation based on a 60 month term, 30% deposit and with an example annual fixed interest rate of 9.95%. Actual interest rate may be higher or lower. Includes an establishment fee of \$205.00. Full term total amount payable of \$35,995.37. Estimate only, not an offer of finance. Terms, conditions and lending criteria apply.